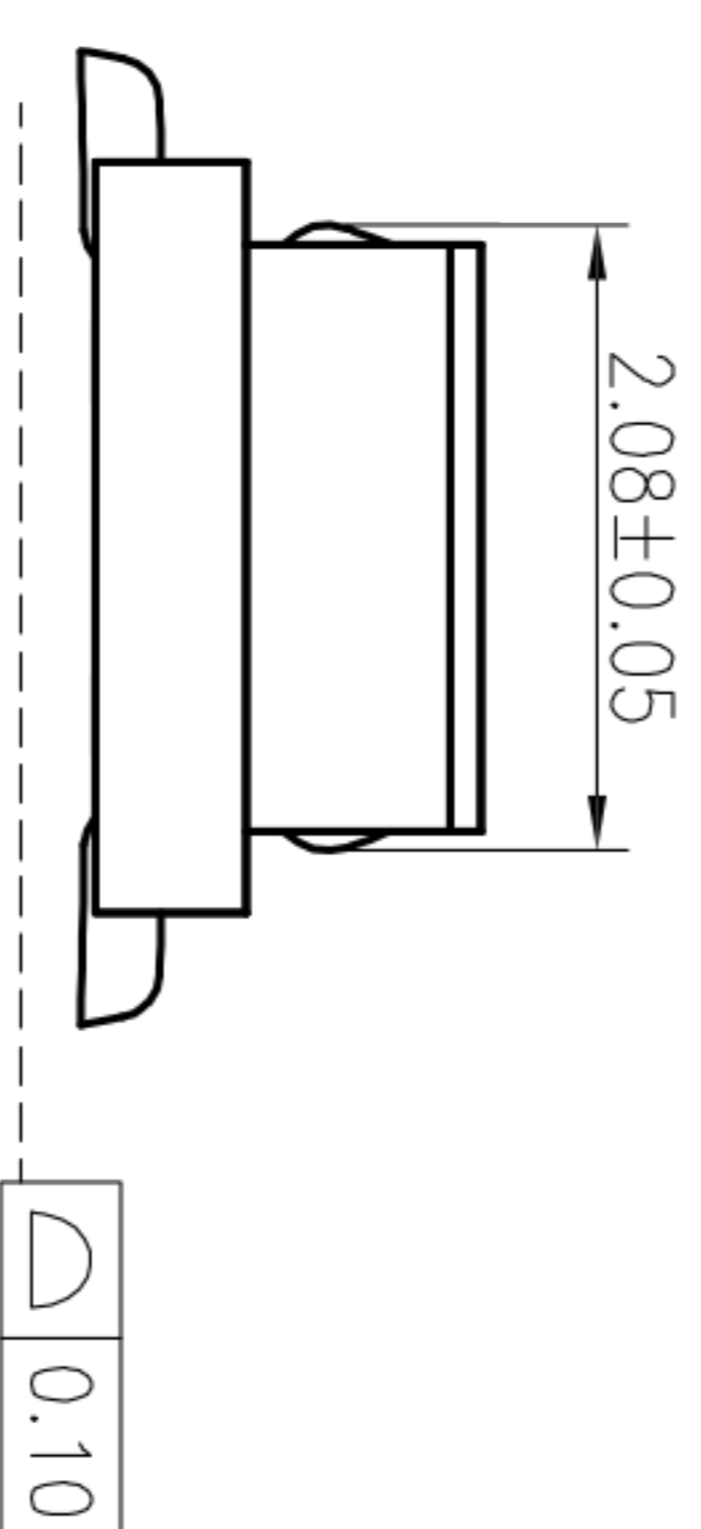
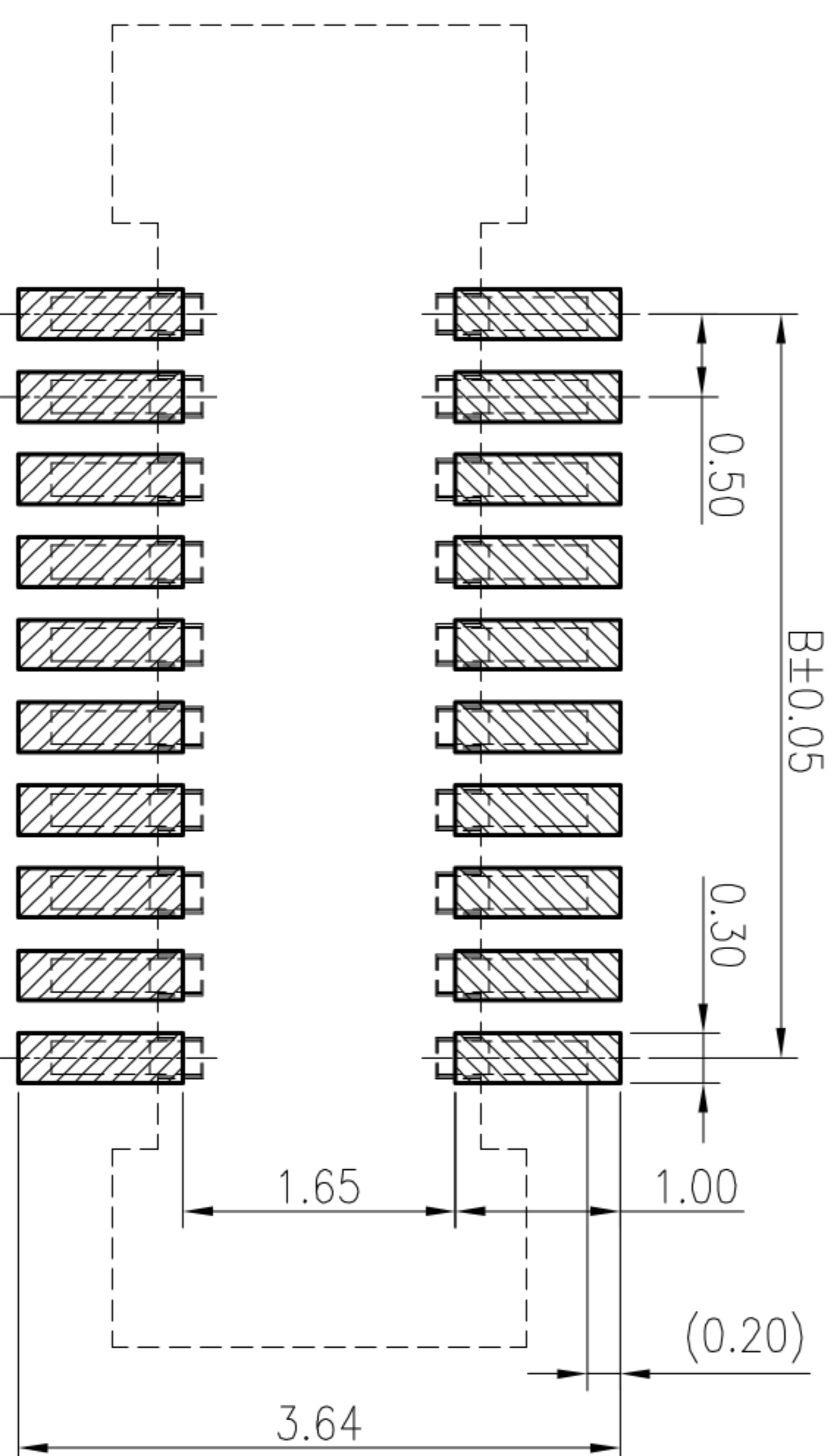
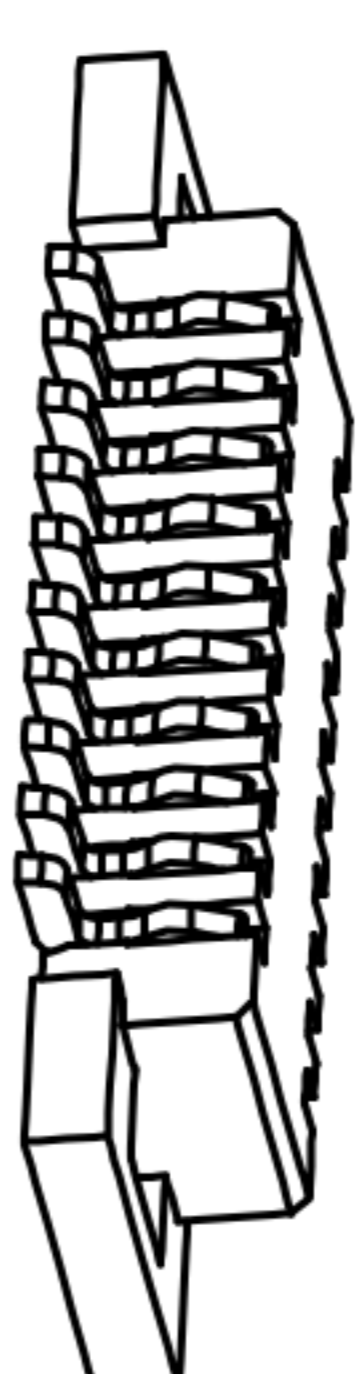


MATING HEIGHT



3D VIEW



RECOMMENDED PCB PATTERN DIM.

TOLERANCE : ±0.05

NOTES:

HOUSING: HIGH TEMPERATURE HOUSING UL94V-0  
 WITHSTANDS IR AND VPR SOLDERING METHODS.  
 CONTACTS: PHOSPHOR BRONZE.  
 PLATING: GOLD PLATED.  
 ELECTRICAL CHARACTERISTICS:  
 CURRENT RATING:0.3 AMP.  
 INSULATOR RESISTANCE:1000MΩ MIN. AT DC 250V.  
 CONTACT RESISTANCE:90MΩ MAX. AT DC 100MA.  
 OPERATING TEMPERATURE:-55°C ~+85°C .

MATING HEIGHT	PLUG HEIGHT (H <sub>1</sub> )	SOCKET HEIGHT (H <sub>1</sub> )	H1		H2	
			H1	H2	H1	H2
1.5	1.28	1.5	0.9	1.3		
2.0		2.0	1.4	1.8		
2.5		2.5	1.9	2.3		

NO. of contacts	Dimensions			
	A	B	C	D
10	5.50	2.00	3.45	4.96
12	6.00	2.50	3.95	5.46
16	7.00	3.50	4.95	6.46
18	7.50	4.00	5.45	6.96
20	8.00	4.50	5.95	7.46
14	6.50	3.00	4.45	5.96
16	7.00	3.50	4.95	6.46
18	7.50	4.00	5.45	6.96
20	8.00	4.50	5.95	7.46
22	8.50	5.00	6.45	7.96
24	9.00	5.50	6.95	8.46
26	9.50	6.00	7.45	8.96
28	10.00	6.50	7.95	9.46
30	10.50	7.00	8.45	9.96
32	11.00	7.50	8.95	10.46
36	12.00	8.50	9.95	11.46
40	13.00	9.50	10.95	12.46
50	15.50	12.00	13.45	14.96
100	28.00	24.50	25.95	27.46

ECN NO.	REV.	DATE.	DESCRIPTION.
	A		NEW

APPROVALS		DATE	TITLE:	
DRAWN	ZHIWEI.CHEN	2015.07.07	0.5MM BTB 单槽立式公座H1.5~2.5	
CHECKED			PART NO. GP02-5XX-GXXP-WOR	
APPROVALS			UNIT: mm	SCALE: 1:1
TOLERANCES ARE			DRAWING NO.	PROJ. SHEET 1 OF 1
30~以上	±0.30	ANGLE		
10~30	±0.20			
5~10	±0.15			
~ 5	±0.10	±2'		

**深圳市联丰电子有限公司**  
 SHENZHEN LINFENG ELECTRONIC CO.,LTD